

INFTS-1000°C V2

Infrared temperature sensor

Range 1000°C
Accuracy 1 % FS
Resolution at 1000°C 15 mV/°C
Response time 50 ms

Supply voltage 5 to 16 V
Supply current 1.5 mA
Output signal 0-5 V

Measurement distance 30 to 100 mm
Emissivity 99 %
Field of view (90% radiation) 5 : 1 at 50 mm
Wave length 8 to 14 μm

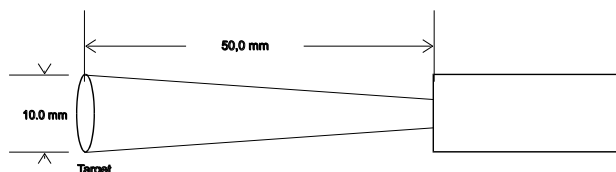
Operating temp -20 to +150°C
Storage temp -40 to +150°C

Material Aluminium
Dimensions 27 x 17 x 11 mm
Weight (without cable) 15 g
Protection IP64
Vibration test 20 Gpp 5'

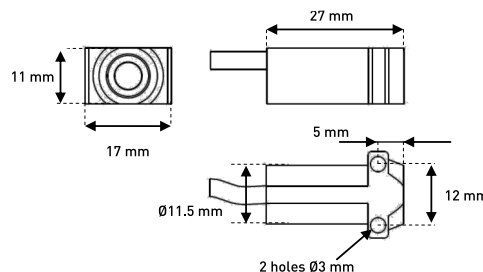
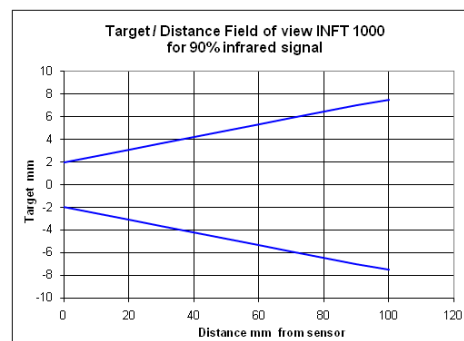
Mounting

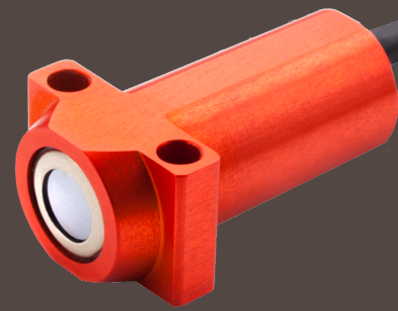
1 m cable:
 3x26AWG FEP tinned copper
 braided cable 250V 200°C

Red 5 to 16 V
White Signal
Black 0 V
Braid Not connected



Calibration table		
° C	Volts Steel	Volts Carbon
0	0.00	0.00
100	0.02	0.02
200	0.07	0.08
300	0.14	0.18
400	0.27	0.36
500	0.49	0.63
600	0.84	1.03
700	1.34	1.60
800	2.02	2.37
900	2.89	3.39
1000	4.01	4.71





INFTS-1200°C V2

Infrared temperature sensor

Range 1200°C
Accuracy 1 % FS
Resolution at 1000°C 9 mV/°C
Response time 50 ms

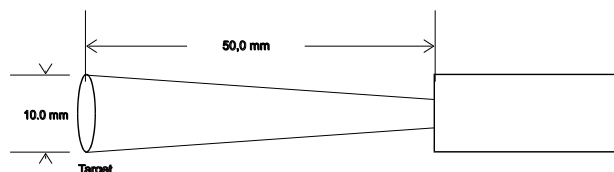
Supply voltage 5 to 16 V
Supply current 1.5 mA
Output signal 0-5 V

Measurement distance 30 to 100 mm
Emissivity 99 %
Field of view (90% radiation) 5 : 1 at 50 mm
Wave length 8 to 14 μm

Operating temp -20 to +150°C
Storage temp -40 to +150°C

Material Aluminium
Dimensions 27 x 17 x 11 mm
Weight (without cable) 15 g
Protection IP64
Vibration test 20 Gpp 5'

Mounting



1 m cable:
 3x26AWG FEP tinned copper
 braided cable 250V 200°C

Red 5 to 16 V
White Signal
Black 0 V
Braid Not connected

Calibration table		
° C	Volts / Steel	Volts / Carbon
0	0,00	0,00
100	0,01	0,01
200	0,04	0,05
300	0,08	0,11
400	0,17	0,21
500	0,30	0,37
600	0,50	0,61
700	0,78	0,94
800	1,17	1,40
900	1,69	2,00
1000	2,37	2,78
1100	3,24	3,76
1200	4,34	4,99

